

# X3 FastMig

BRILLIANTLY SIMPLE, BRUTALLY EFFECTIVE MIG/MAG WELDING





## X3 FastMig



### BRILLIANTLY SIMPLE, BRUTALLY EFFECTIVE MIG/ MAG WELDING

**The X3 FastMig MIG/MAG welding machine is the quickest way to complete high-quality welds in difficult environments.** With a robust design and durable wire feeder, the X3 FastMig can handle the bumps and bangs of heavy industrial MIG/MAG welding. It looks tough, but it's also simple and precise. A new icon-based user interface saves time with a fast setup and easy parameter selection. The X3 FastMig gives you immediate control over key functions for a simple and reliable way to create high-quality welds.

It's a brilliantly simple MIG/MAG welder that is also extremely powerful. **When tasks get tougher, the X3 FastMig is always ready to meet heavy production targets.** Need to complete the biggest job on site? No problem. With 420 amps at a 60% duty cycle, the X3 is brutally effective without compromising on quality.

Lock in on a task and keep going until it's done. **The X3 FastMig is perfect for industrial MIG/MAG welding, but it's also precise enough for simple welds that just need to be done quickly.**

The X3 FastMig MIG/MAG welder comes with the X3 HD300 wire feeder, featuring a 4x4 wire drive mechanism and a strong plastic case with dual-wall construction. The X3 HD300 wire feeder can be attached to the X3 FastMig's MIG/MAG power source with a rotating plate. The safe-lift design allows the wire feeder to be lifted and suspended by the handle. Add a 4-wheel trolley or do more by adding accessories like a hanger for boom for the HD300 Wire Feeder. Adjust parameters while welding with the HR53 hand remote or GRe50 torch remote control which are available as optional accessories.

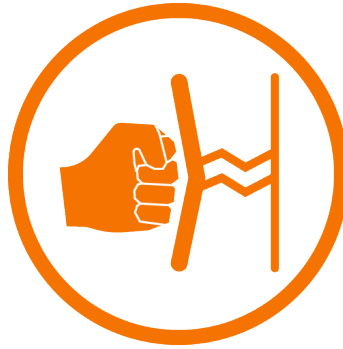


## KEY BENEFITS



### SIMPLY START WELDING

Designed for simplicity and ease of use, the X3 FastMig has a fast setup process and an icon-based user interface for streamlined parameter selection.



### WORK IN TOUGH CONDITIONS

With a robust design and durable wire feeder, the X3 FastMig was built for difficult jobs in the most challenging conditions. It looks tough, and it is.



### FINISH DEMANDING JOBS

With 420 amps at a 60% duty cycle, the X3 FastMig delivers powerful performance with high quality. Lock in on a task and keep going until it's done.

---

## BENEFITS

- Synergic MIG/MAG, MMA and gouging processes
- 420 A at 60% duty cycle
- Over 40 synergic, factory-installed welding programs
- Integrated cooler in the water-cooled power source
- Intuitive icon-based user interface
- GRe50 on-torch remote control or HR53 handheld wired remote control with display
- 2- and 4-wheel trolley options
- Option to suspend the wire feeder with a boom hanger
- Safe lift design in the wire feeder
- Option to attach the welding wire marathon pack to the wire feeder
- Integrated storage for parts in the wire feeder's side door
- Five memory channels
- Cable calibration
- Safety lock



## PRODUCT OPTIONS



### X3S Power Source Syn 420 G

The power source for manual and synergic MIG/MAG, MMA, and gouging processes provides 420 A at 60% duty cycle. X3S Power Source includes over 40 factory-installed welding programs for Fe, Ss, AlSi5, AlMg5, Fe Metal, Fe Rutil, FC-CrNiMo, and Fe Metal filler wires.



### X3S Power Source Syn 420 W

The power source for manual and synergic MIG/MAG, MMA, and gouging processes provides 420 A at 60% duty cycle. X3S Power Source includes an integrated water cooler and over 40 factory-installed welding programs for Fe, Ss, AlSi5, AlMg5, Fe Metal, Fe Rutil, FC-CrNiMo, and Fe Metal filler wires.



### X3 Wire Feeder HD300

Side-loading wire feeder for all X3 FastMig power sources with a digital LCD display. 4-wheel wire feed mechanism, safe-lift design, and integrated storage for parts in the side door. The robust plastic case with dual wall construction has been designed to absorb knocks and bangs during heavy welding fabrication applications. A plastic rotating plate is delivered with the X3 Wire Feeder HD300.





## FEATURES



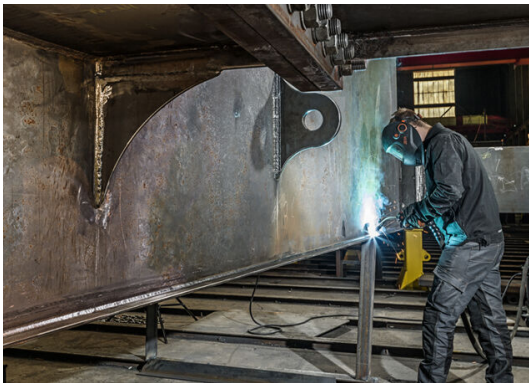
### A new level of durability

The tough and robust plastic-cased wire feeder cabinet features a dual wall construction designed to absorb the knocks of industrial use in heavy welding and fabrication applications.



### Start welding fast

X3 FastMig features a non-language-based user interface that's clear, easy, and fast to set up for both professional and semi-professional welders.



### Meet any production targets

X3 FastMig offers 420 A at a 60% duty cycle, efficiently supporting industrial welding applications. You can choose a spool or marathon pack for the welding wire. X3 FastMig has you covered regardless of the volume of your welding production.



### Versatile welding programs as standard

X3 FastMig comes with pre-installed welding programs enabling fast setup. The programs cover Fe, Ss, AISi5, AlMg5, Fe Metal, Fe Rutil, FC-CrNiMo, and Fe Metal filler wires from 0.8mm to 2.0mm. No matter your welding needs, you can trust the X3 FastMig to deliver high-quality results.



### Lift safely

You can lift the combined weight of the X3 HD300 Wire Feeder, including the welding torch, filler wire, and cables set with the crane, and suspend it from the handle.



### Easy access to cables and connectors

Water hoses and cable connectors are located outside the feeder casing for easy installation and quick changing of the cable packages in service.



### Remote welding power control

The GRe50 and HR53 optional remote controls allow welding power or channel adjustment during welding when working farther away from the wire feeder or in tight spaces.



## ACCESSORIES



**GXe 405G**

400 A, Gas-cooled, 3.5m or 5m, Euro connector



**GXe 405W**

400 A, Water-cooled, 3.5m or 5m, Euro connector



**GXe 505W**

500 A, Water-cooled, 3.5m or 5m, Euro connector



**GXe 305G**

300 A, Gas-cooled, 3.5m or 5m, Euro connector



**GXe 305W**

300 A, Water-cooled, 3.5m or 5m, Euro connector



**HR53**

HR53 is a wired hand remote with a digital display. It enables welding power and channel adjustment, process selection, and safety lock setting when working farther away from the wire feeder or in tight spaces. To use the remote in MIG welding with the X3 FastMig, include item 6185773, Splitter 3/7-pin.



**GRe50**

Classic analog remote control for GXe Series 5 torches for memory channel or wire feeding adjustment. The new shape is lightweight, durable, and easy to handle with welding gloves. The channel step click can be removed by adjusting it with a small screwdriver. Plastic is more robust, and orange potentiometer fixing is improved. Compatible with Kemppi machines with remote control support.



**X3 4-wheel Trolley**

4-wheel transport unit with a gas cylinder holder and lifting points.



**X5 Wire Feeder 2-wheel Trolley**

The lightweight 2-wheel trolley is a lightweight travel solution for easy transport of X5 and X3 FastMig's 300 Wire Feeders.



### X5 Wire Feeder Trolley

4-wheel trolley for X5 and X3 Wire Feeder. Reliable locking mechanism keeps the wire feeder firmly on the wheels.



### X5 Wire Feeder HD300 Hanger for Boom

A wire feeder hanger to make the workspace more versatile. Multiple different angles for the wire feeder. Easy and ergonomic wire spool replacement. Compatible with X5 and X3 Wire Feeder HD300 models.

### Splitter 3/7-pin

Adapter to branch one bus connector into two. Needed with the X3 FastMig when using HR53 Hand Remote in MIG welding.

### X3 InterConnection Cable 70-G 1.5m

1.5-meter gas-cooled interconnection cable with 70 mm<sup>2</sup> cross-sectional area.

### X3 InterConnection Cable 70-W 1.5m

1.5-meter water-cooled interconnection cable with 70 mm<sup>2</sup> cross-sectional area.

### X3 Interconnection Cable 95-G 1.5m

1.5-meter gas-cooled interconnection cable with 95 mm<sup>2</sup> cross-sectional area.

### X3 Interconnection Cable 95-W 1.5m

1.5-meter water-cooled interconnection cable with 95 mm<sup>2</sup> cross-sectional area.

### X3 InterConnection Cable 70-G 5m

5-meter gas-cooled interconnection cable with 70 mm<sup>2</sup> cross-sectional area.

### X3 InterConnection Cable 70-W 5m

5-meter water-cooled interconnection cable with 70 mm<sup>2</sup> cross-sectional area.





**X3 InterConnection Cable 70-G  
10m**

10-meter gas-cooled interconnection cable with 70 mm<sup>2</sup> cross-sectional area.

**X3 InterConnection Cable 70-W  
10m**

10-meter water-cooled interconnection cable with 70 mm<sup>2</sup> cross-sectional area.

**X3 InterConnection Cable 70-G  
15m**

15-meter gas-cooled interconnection cable with 70 mm<sup>2</sup> cross-sectional area.

**X3 InterConnection Cable 70-W  
15m**

15-meter water-cooled interconnection cable with 70 mm<sup>2</sup> cross-sectional area.

**X3 InterConnection Cable 70-G  
20m**

20-meter gas-cooled interconnection cable with 70 mm<sup>2</sup> cross-sectional area.

**X3 InterConnection Cable 70-W  
20m**

20-meter water-cooled interconnection cable with 70 mm<sup>2</sup> cross-sectional area.

**X3 InterConnection Cable 70-G  
25m**

25-meter gas-cooled interconnection cable with 70 mm<sup>2</sup> cross-sectional area.

**X3 InterConnection Cable 70-W  
25m**

25-meter water-cooled interconnection cable with 70 mm<sup>2</sup> cross-sectional area.

**X3 InterConnection Cable 70-G  
30m**

30-meter gas-cooled interconnection cable with 70 mm<sup>2</sup> cross-sectional area.



### X3 InterConnection Cable 70-W 30m

30-meter water-cooled interconnection cable with 70 mm<sup>2</sup> cross-sectional area.

### Extension Cable 70 1m

1-meter extension cable with 70 mm<sup>2</sup> cross-sectional area. With the extension cable, you can extend the length of the welding cable, e.g., when welding with X3 FastMig with a wire that requires reverse polarity.

### Wire Conduit Cable with Connectors 1.8m

1.8-meter high-quality wire conduit cable delivers the filler wire smoothly from the barrel or spool to the wire feeder. Male connectors on both ends fit into the Kempfi feeder and Kempfi wire spool support. Order codes do not include the female snap connector for the wire spool holder or drum. A separate chili liner is required for stainless steel or aluminum, e.g., SP600731 Chili Liner for Ss and Al. The maximum outer diameter for the Chili liner is 4.7 mm.

### Wire Conduit Cable with Connectors 3m

3-meter high-quality wire conduit cable delivers the filler wire smoothly from the barrel or spool to the wire feeder. Male connectors on both ends fit into the Kempfi feeder and Kempfi wire spool support. Order codes do not include the female snap connector for the wire spool holder or drum. A separate chili liner is required for stainless steel or aluminum, e.g., SP600731 Chili Liner for Ss and Al. The maximum outer diameter for the Chili liner is 4.7 mm.

### Wire Conduit Cable with Connectors 4m

4-meter high-quality wire conduit cable delivers the filler wire smoothly from the barrel or spool to the wire feeder. Male connectors on both ends fit into the Kempfi feeder and Kempfi wire spool support. Order codes do not include the female snap connector for the wire spool holder or drum. A separate chili liner is required for stainless steel or aluminum, e.g., SP600731 Chili Liner for Ss and Al. The maximum outer diameter for the Chili liner is 4.7 mm.

### Wire Conduit Cable with Connectors 5m

5-meter high-quality wire conduit cable delivers the filler wire smoothly from the barrel or spool to the wire feeder. Male connectors on both ends fit into the Kempfi feeder and Kempfi wire spool support. Order codes do not include the female snap connector for the wire spool holder or drum. A separate chili liner is required for stainless steel or aluminum, e.g., SP600731 Chili Liner for Ss and Al. The maximum outer diameter for the Chili liner is 4.7 mm.

### Wire Conduit Cable with Connectors 8m

8-meter high-quality wire conduit cable delivers the filler wire smoothly from the barrel or spool to the wire feeder. Male connectors on both ends fit into the Kempfi feeder and Kempfi wire spool support. Order codes do not include the female snap connector for the wire spool holder or drum. A separate chili liner is required for stainless steel or aluminum, e.g., SP600731 Chili Liner for Ss and Al. The maximum outer diameter for the Chili liner is 4.7 mm.

### Wire Conduit Cable 10m

10-meter high-quality wire conduit cable delivers the filler wire smoothly from the barrel or spool to the wire feeder. You also need snap connectors: two male (W005197) and one female (W005189). An alternative solution for a wire conduit where the distance between the wire feeder and the wire drum is greater than 5 meters.

### Wire Conduit Cable 15m

15-meter high-quality wire conduit cable delivers the filler wire smoothly from the barrel or spool to the wire feeder. You also need snap connectors: two male (W005197) and one female (W005189). An alternative solution for a wire conduit where the distance between the wire feeder and the wire drum is greater than 5 meters.



### Wire Conduit Cable 20m

20-meter high-quality wire conduit cable delivers the filler wire smoothly from the barrel or spool to the wire feeder. You also need snap connectors: two male (W005197) and one female (W005189). An alternative solution for a wire conduit where the distance between the wire feeder and the wire drum is greater than 5 meters.

### Wire Conduit Cable 30.5m

30.5-meter high-quality wire conduit cable delivers the filler wire smoothly from the barrel or spool to the wire feeder. You also need snap connectors: two male (W005197) and one female (W005189). An alternative solution for a wire conduit where the distance between the wire feeder and the wire drum is greater than 5 meters.



### Snap connector for wire conduit (male)

Male connector for wire conduit. Note! Two pieces needed per conduit



### Snap connector for drum or spool holder (female)

Female connector for the wire drum or spool holder.



### Quick Connector + Adapter 3/8 DT400

Quick Connector + Adapter 3/8 DT400 for attaching wire conduit to X3 Wire Feeder.



## TECHNICAL SPECIFICATIONS

### X3S Power Source Syn 420 G

Product code	X3S420G
Connection voltage 3~ 50/60 Hz	380...415 V $\pm$ 10 %
Fuse	25 A
Output 60% ED	420 A
Output 100% ED	350 A
Rated power at max. current	20 kVA
Recommended generator power (min)	25 kVA
Welding current and voltage range, MIG	15 A/12 V...420 A/40 V
Welding current and voltage range, MMA	15 A/10V...400 A/41 V
External dimensions LxWxH	698 x 251 x 361 mm
Weight (no accessories)	35.0 kg
Degree of protection	IP23
Standards	IEC 60974-1, -10
EMC class	A
Operating temperature range	-20...+40 °C
Storage temperature range	-40...+60 °C

### X3S Power Source Syn 420 W

Product code	X3S420W
Connection voltage 3~ 50/60 Hz	380...415 V $\pm$ 10 %
Fuse	25 A
Output 60% ED	420 A
Output 100% ED	350 A
Rated power at max. current	20 kVA
Recommended generator power (min)	25 kVA
Rated cooling power at 1 l/min	1 kW
Recommended coolant	MGP 4456 (Kemppi mixture)
Welding current and voltage range, MIG	15 A/12 V...420 A/40 V
Welding current and voltage range, MMA	15 A/10V...400 A/41 V
External dimensions LxWxH	698 x 251 x 613 mm
Weight (no accessories)	47.0 kg
Degree of protection	IP23
Standards	IEC 60974-1, -10
Tank volume	3 l
EMC class	A
Operating temperature range	-20...+40 °C
Storage temperature range	-40...+60 °C



## X3 Wire Feeder HD300

Product code	X3HD300
Wire feed mechanism	4-roll, single-motor
Wire feed speed	0.5 ... 25 m/min
Gun connection	Euro
Wire spool weight, max.	20 kg
Wire spool diameter, max.	300 mm
Filler wires	Fe 0.8 ... 2.0 mm, Ss 0.8 ... 2.0 mm, MC/FC 0.8 ... 2.4 mm, Al 0.8 ... 2.4 mm
Diameter of feed rolls	32 mm
Shielding gas pressure (max)	0.5 MPa
Welding current, 60 %	450 A
Welding current, 100 %	380 A
External dimensions LxWxH	670 x 240 x 465 mm
Weight (no accessories)	14.4 kg
Degree of protection	IP23
Standards	IEC 60974-5, 10
EMC class	A
Operating temperature range	-20...+40 °C
Storage temperature range	-40...+60 °C

## ACCESSORIES

### GXe 405G

Product code	GXE405G35 (3.5m), GXE405G5 (5m)
Load capacity, Ar + CO <sub>2</sub> (35%)	400 A
Changeable neck	No
Rotating neck	Yes
Standards	IEC 60974-7
Type of cooling	Gas
Remote control	Optional GRe50 remote
Welding process	MIG/MAG
Contact tip	M10x1
Wire diameters (mm)	0.8-1.6
Type of connection	Euro
LED option	No
Gun handle	Yes
Cable length (m)	3.5 / 5





## GXe 405W

Product code	GXE405W35 (3.5m), GXE405W5 (5m)
Load capacity, Ar + CO2 (100%)	400 A
Changeable neck	No
Rotating neck	No
Standards	IEC 60974-7
Type of cooling	Water
Remote control	Optional GRe50 remote
Welding process	MIG/MAG
Contact tip	M10x1
Wire diameters (mm)	0.8-1.6
Type of connection	Euro
LED option	No
Gun handle	Yes
Cable length (m)	3.5 / 5

## GXe 505W

Product code	GXE505W35 (3.5m), GXE505W5 (5m)
Load capacity, Ar + CO2 (100%)	500 A
Changeable neck	No
Rotating neck	No
Standards	IEC 60974-7
Type of cooling	Water
Remote control	Optional GRe50 remote
Welding process	MIG/MAG
Contact tip	M10x1
Wire diameters (mm)	0.8-1.6
Type of connection	Euro
LED option	No
Gun handle	Yes
Cable length (m)	3.5 / 5



## GXe 305G

Product code	GXE305G35 (3.5m), GXE305G5 (5m)
Load capacity, Ar + CO2 (35%)	300 A
Changeable neck	No
Rotating neck	Yes
Standards	IEC 60974-7
Type of cooling	Gas
Remote control	Optional GRe50 remote
Welding process	MIG/MAG
Contact tip	M10x1
Wire diameters (mm)	0.8-1.2
Type of connection	Euro
LED option	No
Gun handle	Yes
Cable length (m)	3.5 / 5

## GXe 305W

Product code	GXE305W35 (3.5m), GXE305W5 (5m)
Load capacity, Ar + CO2 (100%)	300 A
Changeable neck	No
Rotating neck	No
Standards	IEC 60974-7
Type of cooling	Water
Remote control	Optional GRe50 remote
Welding process	MIG/MAG
Contact tip	M10x1
Wire diameters (mm)	0.8-1.6
Type of connection	Euro
LED option	No
Gun handle	Yes
Cable length (m)	3.5 / 5

## HR53

Description	Digital Hand Remote
Product code	HR53

## GRe50

Description	remote control
Product code	GRe50

## X3 4-wheel Trolley

Product code	X3T4
--------------	------



### X5 Wire Feeder 2-wheel Trolley

Product code	X5702010000
--------------	-------------

### X5 Wire Feeder Trolley

Product code	X5702020000
--------------	-------------

### X5 Wire Feeder HD300 Hanger for Boom

Product code	X5702041000
--------------	-------------

### Splitter 3/7-pin

Product code	6185773
--------------	---------

### X3 InterConnection Cable 70-G 1.5m

Product code	X37001MG
--------------	----------

### X3 InterConnection Cable 70-W 1.5m

Product code	X37001MW
--------------	----------

### X3 Interconnection Cable 95-G 1.5m

Product code	X39501MG
--------------	----------

### X3 Interconnection Cable 95-W 1,5m

Product code	X39501MW
--------------	----------

### X3 InterConnection Cable 70-G 5m

Product code	X37005MG
--------------	----------

### X3 InterConnection Cable 70-W 5m

Product code	X37005MW
--------------	----------

### X3 InterConnection Cable 70-G 10m

Product code	X37010MG
--------------	----------

### X3 InterConnection Cable 70-W 10m

Product code	X37010MW
--------------	----------

### X3 InterConnection Cable 70-G 15m

Product code	X37015MG
--------------	----------



### X3 InterConnection Cable 70-W 15m

Product code	X37015MW
--------------	----------

### X3 InterConnection Cable 70-G 20m

Product code	X37020MG
--------------	----------

### X3 InterConnection Cable 70-W 20m

Product code	X37020MW
--------------	----------

### X3 InterConnection Cable 70-G 25m

Product code	X37025MG
--------------	----------

### X3 InterConnection Cable 70-W 25m

Product code	X37025MW
--------------	----------

### X3 InterConnection Cable 70-G 30m

Product code	X37030MG
--------------	----------

### X3 InterConnection Cable 70-W 30m

Product code	X37030MW
--------------	----------

### Extension Cable 70 1m

Product code	SP800550
--------------	----------

### Wire Conduit Cable with Connectors 1.8m

Product code	SP600535
--------------	----------

### Wire Conduit Cable with Connectors 3m

Product code	SP600536
--------------	----------

### Wire Conduit Cable with Connectors 4m

Product code	SP800803
--------------	----------

### Wire Conduit Cable with Connectors 5m

Product code	SP600537
--------------	----------

### Wire Conduit Cable with Connectors 8m

Product code	SP600686
--------------	----------



### Wire Conduit Cable 10m

Product code	SP600780
--------------	----------

### Wire Conduit Cable 15m

Product code	SP600781
--------------	----------

### Wire Conduit Cable 20m

Product code	SP600782
--------------	----------

### Wire Conduit Cable 30.5m

Product code	SP600783
--------------	----------

### Snap connector for wire conduit (male)

Product code	W005197
--------------	---------

### Snap connector for drum or spool holder (female)

Product code	W005189
--------------	---------

### Quick Connector + Adapter 3/8 DT400

Product code	SP801035
--------------	----------



[WWW.KEMPPI.COM](http://WWW.KEMPPI.COM)

---

**Kemppi** is the design leader in the arc welding industry. We are committed to boosting the quality and productivity of welding by continuous development of the welding arc and by working for a greener and more equal world. Kemppi supplies sustainable products, digital solutions, and services for professionals from industrial welding companies to single contractors. The usability and reliability of our products is our guiding principle. We operate with a highly skilled partner network covering over 70 countries to make its expertise locally available. Headquartered in Lahti, Finland, Kemppi employs close to 800 professionals in 16 countries and has a revenue of 195 MEUR in 2022.

