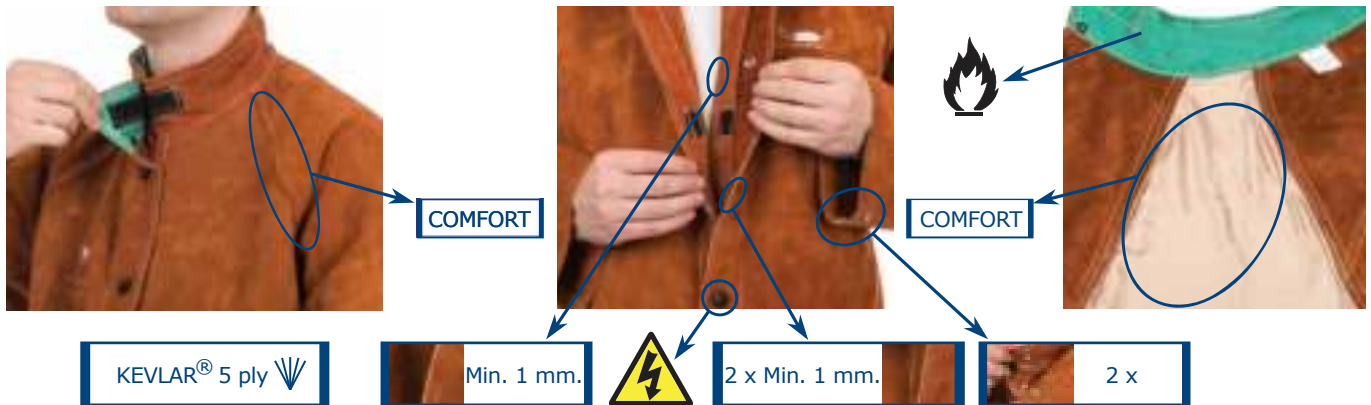


## Lava Brown™ CLOTHING



Lava Brown™ products are made of high quality A-grade side split cow leather

### 44-7300 Jacket full leather



- A-grade side split cow leather
- KEVLAR® 5 ply
- Leather thickness: min. 1 mm.



EN ISO 11611:2015  
CLASS 2/A1+A2  
TÜV BP 60126846 0001  
TÜV 21285003 001



**EN ISO 11611:2015  
CLASS 2/A1+A2**

	↕	
44-7300M	76 cm.	100 cm.
44-7300L	81 cm.	112 cm.
44-7300XL	86 cm.	124 cm.
44-7300XXL	91 cm.	136 cm.
44-7300XXXL	96 cm.	148 cm.
44-7300XXXXL	96 cm.	160 cm.

### 44-7300/P Jacket with flame retardant back



- A-grade side split cow leather
- KEVLAR® 5 ply
- Leather thickness: min. 1 mm.
- Back: flame retardant cotton 315 gr/m²



EN ISO 11611:2015  
CLASS 1/A1+A2  
TÜV BP 60127076 0001  
TÜV 21280500 001



**EN ISO 11611:2015  
CLASS 1/A1+A2**

	↕	
44-7300M/P	76 cm.	100 cm.
44-7300L/P	81 cm.	112 cm.
44-7300XL/P	86 cm.	124 cm.
44-7300XXL/P	91 cm.	136 cm.
44-7300XXXL/P	96 cm.	148 cm.

## Lava Brown™ CLOTHING

### 44-7300/P-AQ Ladies jacket with flame retardant back



- A-grade side split cow leather
- KEVLAR® 5 ply
- Leather thickness: min. 1 mm.
- Back: flame retardant cotton 315 gr/m<sup>2</sup>



EN ISO 11611:2015  
CLASS 1/A1+A2  
TÜV BP 60127076 0001  
TÜV 21280500 001



**EN ISO 11611:2015  
CLASS 1/A1+A2**

	↕	↕
44-7300S/P-AQ	76 cm.	98 cm.
44-7300M/P-AQ	76 cm.	110 cm.
44-7300L/P-AQ	81 cm.	120 cm.
44-7300XL/P-AQ	86 cm.	130 cm.

### 44-7800 Cape sleeve



- A-grade side split cow leather
- KEVLAR® 5 ply
- Leather thickness: min. 1 mm.



EN ISO 11611:2015  
CLASS 2/A1+A2  
TÜV BP 60126846 0001  
TÜV 21285003 001



**EN ISO 11611:2015  
CLASS 2/A1+A2**

	↕	
44-7800M	100 cm.	
44-7800L	112 cm.	
44-7800XL	124 cm.	
44-7800XXL	136 cm.	
44-7800XXXL	148 cm.	

### 44-78.. Apron for cape sleeves



- A-grade side split cow leather
- KEVLAR® 5 ply
- Leather thickness: min. 1 mm.



EN ISO 11611:2015  
CLASS 2/A1+A2  
TÜV BP 60126846 0001  
TÜV 21285003 001



**EN ISO 11611:2015  
CLASS 2/A1+A2**

	↕	↔
44-7820	51 cm.	56 cm.
44-7828	71 cm.	56 cm.
44-7836	91 cm.	56 cm.
44-7836XL	120 cm.	80 cm.



## Lava Brown™ CLOTHING

**44-7248**

**Pants with breast protection and open back**

**44-7440**

**Pants with open back**



122 cm.

- A-grade side split cow leather
- KEVLAR® 5 ply
- Leather thickness: min. 1 mm.



102 cm.



**STEERSOtuff®**

EN ISO 11611:2015  
CLASS 2/A1+A2  
TÜV BP 60126846 0001  
TÜV 21285003 001



**EN ISO 11611:2015  
CLASS 2/A1+A2**

**44-7440/7600**

**Pants with closed back**



- A-grade side split cow leather
- KEVLAR® 5 ply
- Leather thickness: min. 1 mm.

44-7440/7600M  
44-7440/7600L  
44-7440/7600XL  
44-7440/7600XXL  
44-7440/7600XXXL

110 cm.  
112 cm.  
116 cm.  
122 cm.  
128 cm.



**STEERSOtuff®**

EN ISO 11611:2015  
CLASS 2/A1+A2  
TÜV BP 60126846 0001  
TÜV 21285003 001



**EN ISO 11611:2015  
CLASS 2/A1+A2**

**44-7440/7648**

**Pants with breast protection and closed back, bib and brace**



- A-grade side split cow leather
- KEVLAR® 5 ply
- Leather thickness: min. 1 mm.

44-7440/7648M  
44-7440/7648L  
44-7440/7648XL  
44-7440/7648XXL  
44-7440/7648XXXL  
44-7440/7648XXXXL

136 cm.  
140 cm.  
144 cm.  
148 cm.  
152 cm.  
156 cm.



**STEERSOtuff®**

EN ISO 11611:2015  
CLASS 2/A1+A2  
TÜV BP 60126846 0001  
TÜV 21285003 001



**EN ISO 11611:2015  
CLASS 2/A1+A2**

## Lava Brown™ CLOTHING

### 44-71.. Apron



- A-grade side split cow leather
- KEVLAR® 5 ply
- Leather thickness: min. 1 mm.
- Self-balancing strap system

	↕	↔
44-7124	60 cm.	60 cm.
44-7136	91 cm.	60 cm.
44-7142	107 cm.	60 cm.
44-7142 W	107 cm.	80 cm.
44-7148	122 cm.	60 cm.
44-7148 W	122 cm.	80 cm.

COMFORT



44-7124  
60x60 cm.



STEERSOtuff®

EN ISO 11611:2015  
CLASS 2/A1+A2  
TÜV BP 60126846 0001  
TÜV 21285003 001



EN ISO 11611:2015  
CLASS 2/A1+A2

### 44-7023 Sleeves



- A-grade side split cow leather
- KEVLAR® 5 ply
- Leather thickness: min. 1 mm.
- Balancing strap system

44-7023

↕  
58 cm.



STEERSOtuff®

EN ISO 11611:2015  
CLASS 2/A1+A2  
TÜV BP 60126846 0001  
TÜV 21285003 001



EN ISO 11611:2015  
CLASS 2/A1+A2

### 44-7028 Heavy duty arm guard (piece)



- Heavy duty
- A-grade side split cow leather
- KEVLAR® 5 ply
- Leather thickness: min. 1 mm.
- COMFOflex® lining used
- Hook and loop closure
- Inside 520 gr./m² flame retardant fabric
- See for extension 44-7114EXT (page 18)

44-7028

↕  
35 cm.



↻  
32-41 cm.



↻  
35-45 cm.



STEERSOtuff®

EN ISO 11611:2015  
CLASS 2/A1+A2  
TÜV BP 60126846 0001  
TÜV 21285003 001



EN ISO 11611:2015  
CLASS 2/A1+A2

## Lava Brown™ CLOTHING

### 44-7106 Spats for shoe protection



- A-grade side split cow leather
- KEVLAR® 5 ply
- Leather thickness: min. 1 mm.
- With under the shoe an elastic strap to secure shoe top cover

44-7106

33-43 cm. 15 cm.



EN ISO 11611:2015  
CLASS 2/A1+A2  
TÜV BP 60126846 0001  
TÜV 21285003 001



**EN ISO 11611:2015  
CLASS 2/A1+A2**

### 44-7114 Spats for leg and shoe protection



- A-grade side split cow leather
- KEVLAR® 5 ply
- Leather thickness: min. 1 mm.
- With bendable insert at shin and shoe top to allow shape formation
- See for extension 44-7114EXT

44-7114

37-47 cm. 36 cm.



EN ISO 11611:2015  
CLASS 2/A1+A2  
TÜV BP 60126846 0001  
TÜV 21285003 001



**EN ISO 11611:2015  
CLASS 2/A1+A2**

### 44-7114EXT Diameter extension for 44-7114 and 44-7028



44-7114EXT + 44-7114 = 52-62 cm.

- A-grade side split cow leather
- KEVLAR® 5 ply
- Leather thickness: min. 1 mm.
- 15 cm. wide extension for 44-7114 and 44-7028

44-7114EXT

15 cm.



EN ISO 11611:2015  
CLASS 2/A1+A2  
TÜV BP 60126846 0001  
TÜV 21285003 001



**EN ISO 11611:2015  
CLASS 2/A1+A2**

## Golden Brown™ CLOTHING



KEVLAR® 3 ply √



Min. 1 mm.

2 x Min. 1 mm.



1 x

**Golden Brown™ products are made of high quality side split or grain cow leather**  
*Golden Brown™ split leather products: pages 20, 21, 22, 23. Grain leather products: page 24.*

### 44-2530/P Jacket with flame retardant back



- Side split cow leather
- KEVLAR® 3 ply √
- Leather thickness: min. 1 mm.
- Back: flame retardant cotton 305 gr/m<sup>2</sup>

44-2530M/P  
 44-2530L/P  
 44-2530XL/P  
 44-2530XXL/P  
 44-2530XXXL/P

↑↓	↑	
76 cm.	100 cm.	
81 cm.	112 cm.	
86 cm.	124 cm.	
91 cm.	136 cm.	
96 cm.	148 cm.	



**Golden Brown™**

EN ISO 11611:2015  
 CLASS 1/A1+A2  
 TÜV BP 60132808 0001  
 TÜV 60141016 001



**EN ISO 11611:2015  
 CLASS 1/A1+A2**

### 44-2847 Shoulder apron



- Side split cow leather
- KEVLAR® 3 ply √
- Leather thickness: min. 1 mm.

44-2847M  
 44-2847L  
 44-2847XL

↑↓	↔	
92 cm.	53 cm.	
92 cm.	58 cm.	
92 cm.	63 cm.	



**Golden Brown™**

EN ISO 11611:2015  
 CLASS 2/A1+A2  
 TÜV BP 60132827 0001  
 TÜV 60150123 001



**EN ISO 11611:2015  
 CLASS 2/A1+A2**

## Golden Brown™ CLOTHING

### 44-2800 Cape sleeve



- Side split cow leather
- KEVLAR® 3 ply
- Leather thickness: min. 1 mm.

44-2800L  
44-2800XL  
44-2800XXL



112 cm.  
124 cm.  
136 cm.



Golden Brown™

EN ISO 11611:2015  
CLASS 2/A1+A2  
TÜV BP 60132827 0001  
TÜV 60150123 001



**EN ISO 11611:2015  
CLASS 2/A1+A2**

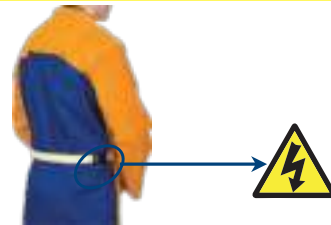
### 44-28.. Apron for cape sleeves



- Side split cow leather
- KEVLAR® 3 ply
- Leather thickness: min. 1 mm.

44-2828  
44-2836

↕      ↔  
71 cm.    56 cm.  
91 cm.    56 cm.



Golden Brown™

EN ISO 11611:2015  
CLASS 2/A1+A2  
TÜV BP 60132827 0001  
TÜV 60150123 001



**EN ISO 11611:2015  
CLASS 2/A1+A2**

### 44-21.. Apron



- Side split cow leather
- KEVLAR® 3 ply
- Leather thickness: min. 1 mm.
- Self-balancing strap system

44-2136  
44-2142  
44-2142 W

↕      ↔  
91 cm.    60 cm.  
107 cm.   60 cm.  
107 cm.   80 cm.



Golden Brown™

EN ISO 11611:2015  
CLASS 2/A1+A2  
TÜV BP 60132827 0001  
TÜV 60150123 001



**EN ISO 11611:2015  
CLASS 2/A1+A2**

## Golden Brown™ CLOTHING

### 44-2600 Pants



- Side split cow leather
- KEVLAR® 3 ply
- Leather thickness: min. 1 mm.

44-2600M	110 cm.
44-2600L	112 cm.
44-2600XL	116 cm.



Golden Brown™

EN ISO 11611:2015  
CLASS 2/A1+A2  
TÜV BP 60132808 0001  
TÜV 60141016 001



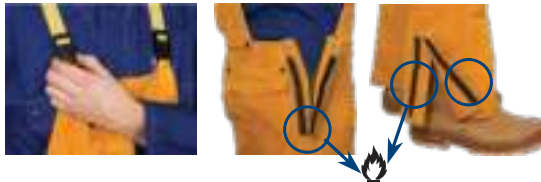
**EN ISO 11611:2015  
CLASS 2/A1+A2**

### 44-2648 Pants with breast protection, bib and brace



- Side split cow leather
- KEVLAR® 3 ply
- Leather thickness: min. 1 mm.

44-2648M	136 cm.
44-2648L	140 cm.
44-2648XL	144 cm.
44-2648XXL	148 cm.



Golden Brown™

EN ISO 11611:2015  
CLASS 2/A1+A2  
TÜV BP 60132808 0001  
TÜV 60141016 001



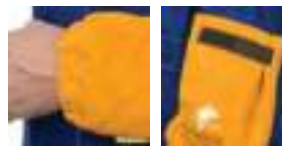
**EN ISO 11611:2015  
CLASS 2/A1+A2**

### 44-2321, 44-2321XL Sleeves



- Side split cow leather
- KEVLAR® 3 ply
- Leather thickness: min. 1 mm.
- Hook and loop closure at the top
- Wrist-end with elastic band included

44-2321	52 cm.	21-31 cm.	34-47 cm.
44-2321XL	52 cm.	21-31 cm.	45-60 cm.



Golden Brown™

EN ISO 11611:2015  
CLASS 2/A1+A2  
TÜV BP 60132827 0001  
TÜV 60150123 001



**EN ISO 11611:2015  
CLASS 2/A1+A2**



## Golden Brown™ CLOTHING

### 44-2106 Spats for shoe protection



- Side split cow leather
- KEVLAR® 3 ply
- Leather thickness: min. 1 mm.
- With under the shoe an elastic strap to secure shoe top cover

44-2106

33-43 cm. 15 cm.



Golden Brown™

EN ISO 11611:2015  
CLASS 2/A1+A2  
TÜV BP 60132827 0001  
TÜV 60150123 001



**EN ISO 11611:2015  
CLASS 2/A1+A2**

### 44-2114 Spats for leg and shoe protection



- Side split cow leather
- KEVLAR® 3 ply
- Leather thickness: min. 1 mm.
- With bendable insert at shin and shoe top to allow shape formation

44-2114

37-47 cm. 36 cm.



Golden Brown™

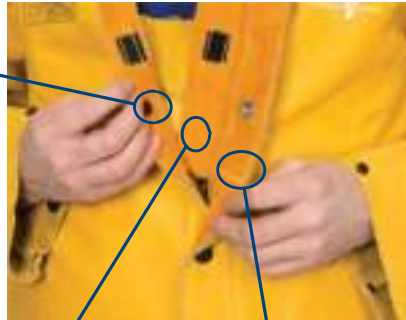
EN ISO 11611:2015  
CLASS 2/A1+A2  
TÜV BP 60132827 0001  
TÜV 60150123 001



**EN ISO 11611:2015  
CLASS 2/A1+A2**



## Golden Brown™ CLOTHING



KEVLAR® 3 ply √

Min. 1 mm.

2 x Min. 1 mm.

1 x

**Golden Brown™ products are made of high quality side split or grain cow leather**

*Golden Brown™ split leather products: pages 20, 21, 22, 23. Grain leather products: page 24.*

### 44-5530 Jacket full leather



- Grain cow leather
- KEVLAR® 3 ply √
- Leather thickness: min. 1 mm.



**Golden Brown™**

EN ISO 11611:2015  
CLASS 2/A1+A2  
TÜV BP 60132801 0001  
TÜV 60140939 001



**EN ISO 11611:2015  
CLASS 2/A1+A2**

44-5530L  
44-5530XL  
44-5530XXL  
44-5530XXXL

↑	81 cm.	112 cm.
	86 cm.	124 cm.
	91 cm.	136 cm.
	96 cm.	148 cm.

### 44-5600 Pants with breast protection, bib and brace



- Grain cow leather
- KEVLAR® 3 ply √
- Leather thickness: min. 1 mm.



**Golden Brown™**

EN ISO 11611:2015  
CLASS 2/A1+A2  
TÜV BP 60132801 0001  
TÜV 60140939 001



**EN ISO 11611:2015  
CLASS 2/A1+A2**

44-5600L  
44-5600XL  
44-5600XXL  
44-5600XXXL

↑	140 cm.
	144 cm.
	148 cm.
	152 cm.

## Yellowjacket® CLOTHING



KEVLAR® 3 ply ✓



Min. 1 mm.

305 gr./m<sup>2</sup>



1 x

**Yellowjacket® product is made of 305 gr./m<sup>2</sup> flame retardant cotton body and split cow leather sleeves**

### 33-3060 Jacket, flame retardant cotton with leather sleeves



- 305 gr./m<sup>2</sup> flame retardant cotton body
- split cow leather sleeves
- KEVLAR® 3 ply ✓

**Yellowjacket®**

EN ISO 11611:2015  
CLASS 1/A1+A2  
TÜV BP 60132808 0001  
TÜV 60141016 001

	↕	
33-3060S	76 cm.	108 cm.
33-3060M	76 cm.	116 cm.
33-3060L	81 cm.	127 cm.
33-3060XL	86 cm.	138 cm.
33-3060XXL	91 cm.	147 cm.
33-3060XXXL	96 cm.	158 cm.
33-3060XXXXL	96 cm.	168 cm.



**EN ISO 11611:2015  
CLASS 1/A1+A2**



## Arc Knight® CLOTHING



KEVLAR® 3 ply √



520 gr./m<sup>2</sup>



Double material



1 x

Arc Knight® 38-4350, 38-4355, 38-44.. and 38-4340 are made of heavy duty 520 gr./m<sup>2</sup> FR cotton with split cow leather reinforcement.

Arc Knight® 38-4330, 38-4335, 38-4375, 38-4328, 38-43.., 38-4360 and 38-4321XL are made of heavy duty 520 gr./m<sup>2</sup> FR cotton.

### 38-4350 Jacket with leather reinforcement



- High comfort and flexibility
- Heavy duty 520 gr./m<sup>2</sup> FR cotton with black split cow leather reinforcement
- KEVLAR® 3 ply √
- Sleeve with double closure



Arc Knight®

EN ISO 11611:2015  
CLASS 2/A1+A2  
TÜV BP 60122567 0001  
TÜV 21260757 003



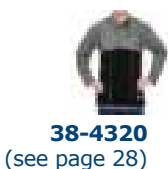
EN ISO 11611:2015  
CLASS 2/A1+A2

	76 cm.	96 cm.
38-4350M	81 cm.	104 cm.
38-4350L	86 cm.	112 cm.
38-4350XL	91 cm.	120 cm.
38-4350XXL	96 cm.	128 cm.

### 38-4330 Jacket



44-7820  
44-7828  
44-7836  
44-7836XL  
(see page 15)



38-4320  
(see page 28)



44-2828  
44-2836  
(see page 21)

- High comfort and flexibility
- Heavy duty 520 gr./m<sup>2</sup> FR cotton
- KEVLAR® 3 ply √
- Possibility to add a *Lava Brown™* or *Golden Brown™* apron to this jacket



Arc Knight®

EN ISO 11611:2015  
CLASS 2/A1+A2  
TÜV BP 60122567 0001  
TÜV 21260757 003



EN ISO 11611:2015  
CLASS 2/A1+A2

	76 cm.	96 cm.
38-4330M	81 cm.	104 cm.
38-4330L	86 cm.	112 cm.
38-4330XL	91 cm.	120 cm.
38-4330XXL	96 cm.	128 cm.

## Arc Knight® CLOTHING

### 38-4335 Jacket, high visibility



- High visibility
- High comfort and flexibility
- Heavy duty 520 gr./m<sup>2</sup> FR cotton
- KEVLAR® 3 ply
- Available in size: M, L, XL, XXL, XXXL

### 38-4355 Jacket, high visibility



**Arc Knight®**

**EN ISO 11611:2015  
CLASS 2/A1+A2  
EN ISO 20471:2013  
+ A1:2016 clause 6  
TÜV BP 60122567 0003  
TÜV 21260757 003**

### 38-4375 Lab coat



- High comfort and flexibility
- Heavy duty 520 gr./m<sup>2</sup> FR cotton
- KEVLAR® 3 ply

38-4375M  
38-4375L  
38-4375XL  
38-4375XXL

	↕	
114 cm.		96 cm.
114 cm.		104 cm.
114 cm.		112 cm.
114 cm.		120 cm.

**Arc Knight®**

EN ISO 11611:2015  
CLASS 2/A1+A2  
TÜV BP 60122567 0001  
TÜV 21260757 003

**EN ISO 11611:2015  
CLASS 2/A1+A2**

### 38-4328 Cape sleeve



- High comfort and flexibility
- Heavy duty 520 gr./m<sup>2</sup> FR cotton
- KEVLAR® 3 ply

38-4328M  
38-4328L  
38-4328XL  
38-4328XXL  
38-4328XXXL

96 cm.	
104 cm.	
112 cm.	
120 cm.	
128 cm.	

**Arc Knight®**

EN ISO 11611:2015  
CLASS 2/A1+A2  
TÜV BP 60122567 0001  
TÜV 21260757 003

**EN ISO 11611:2015  
CLASS 2/A1+A2**

## Arc Knight® CLOTHING

### 38-4320 Apron for cape sleeve



- High comfort and flexibility
- Black split cow leather
- KEVLAR® 3 ply

38-4320

51 cm.

56 cm.



Arc Knight®

EN ISO 11611:2015  
CLASS 2/A1+A2

TÜV BP 60122567 0001  
TÜV 21260757 003



EN ISO 11611:2015  
CLASS 2/A1+A2

### 38-43.. Apron



- High comfort and flexibility
- Heavy duty 520 gr./m<sup>2</sup> FR cotton
- KEVLAR® 3 ply
- Self-balancing strap system

38-4336

91 cm.

60 cm.

38-4342

107 cm.

60 cm.

38-4342 W

107 cm.

80 cm.

COMFORT



Arc Knight®

EN ISO 11611:2015  
CLASS 2/A1+A2

TÜV BP 60122567 0001  
TÜV 21260757 003



EN ISO 11611:2015  
CLASS 2/A1+A2

### 38-44.. Apron with leather reinforcement



- High comfort and flexibility
- Heavy duty 520 gr./m<sup>2</sup> FR cotton with black split cow leather reinforcement
- KEVLAR® 3 ply
- Self-balancing strap system

38-4436

91 cm.

60 cm.

38-4442

107 cm.

60 cm.

38-4442 W

107 cm.

80 cm.

COMFORT



Arc Knight®

EN ISO 11611:2015  
CLASS 2/A1+A2

TÜV BP 60122567 0001  
TÜV 21260757 003



EN ISO 11611:2015  
CLASS 2/A1+A2

## Arc Knight® CLOTHING

### 38-4360 Pants



- High comfort and flexibility
- Heavy duty 520 gr./m<sup>2</sup> FR cotton
- KEVLAR® 3 ply

38-4360M	79 cm.
38-4360L	81 cm.
38-4360XL	83 cm.
38-4360XXL	85 cm.

- Possibility to add knee pads

38-4380M	136 cm.
38-4380L	140 cm.
38-4380XL	144 cm.
38-4380XXL	148 cm.
38-4380XXXL	152 cm.

### 38-4380 Pants, breast protection, bib and brace



Arc Knight®

EN ISO 11611:2015  
CLASS 2/A1+A2  
TÜV BP 60122567 0001  
TÜV 21260757 003



**EN ISO 11611:2015  
CLASS 2/A1+A2**

### 38-4340 Pants with leather reinforcement, breast protection, bib and brace



- High comfort and flexibility
- Heavy duty 520 gr./m<sup>2</sup> FR cotton with black split cow leather reinforcement
- KEVLAR® 3 ply

38-4340M	136 cm.
38-4340L	140 cm.
38-4340XL	144 cm.
38-4340XXL	148 cm.
38-4340XXXL	152 cm.



Arc Knight®

EN ISO 11611:2015  
CLASS 2/A1+A2  
TÜV BP 60122567 0001  
TÜV 21260757 003



**EN ISO 11611:2015  
CLASS 2/A1+A2**

### 38-4321XL Sleeves



- High comfort and flexibility
- Heavy duty 520 gr./m<sup>2</sup> FR cotton
- KEVLAR® 3 ply

38-4321XL	52 cm.	21-31 cm.	45-60 cm.
-----------	--------	-----------	-----------



Arc Knight®

EN ISO 11611:2015  
CLASS 2/A1+A2  
TÜV BP 60122567 0001  
TÜV 21260757 003



**EN ISO 11611:2015  
CLASS 2/A1+A2**

## Fire Fox™ CLOTHING



**Fire Fox™ clothing is made of 305 gr./m<sup>2</sup> flame retardant cotton**

### 33-2300 Jacket



- 44-7820
- 44-7828
- 44-7836
- 44-7836XL (see page 15)
- 44-2828
- 44-2836 (see page 21)

38-4320 (see page 28)

- 305 gr./m<sup>2</sup> flame retardant cotton
- KEVLAR® 3 ply
- Possibility to add a *Lava Brown™* or *Golden Brown™* apron to this jacket

33-2300M	76 cm.	96 cm.
33-2300L	81 cm.	104 cm.
33-2300XL	86 cm.	112 cm.
33-2300XXL	91 cm.	120 cm.
33-2300XXXL	96 cm.	128 cm.



**Fire Fox™**

EN ISO 11611:2015  
CLASS 1/A1+A2  
TÜV BP 60148715 0001  
TÜV 60332344 001



**EN ISO 11611:2015  
CLASS 1/A1+A2**

### 33-2600 Pants



- 305 gr./m<sup>2</sup> flame retardant cotton
- KEVLAR® 3 ply
- Possibility to add knee pads

33-2600M	79 cm.
33-2600L	81 cm.
33-2600XL	83 cm.
33-2600XXL	85 cm.
33-2600XXXL	87 cm.



**Fire Fox™**

EN ISO 11611:2015  
CLASS 1/A1+A2  
TÜV BP 60148715 0001  
TÜV 60332344 001



**EN ISO 11611:2015  
CLASS 1/A1+A2**



## Fire Fox™ CLOTHING

### 33-2700 Pants with breast protection, bib and brace



- 305 gr./m<sup>2</sup> flame retardant cotton
- KEVLAR® 3 ply
- Possibility to add knee pads

33-2700M  
33-2700L  
33-2700XL  
33-2700XXL  
33-2700XXXL



79 cm.  
81 cm.  
83 cm.  
85 cm.  
87 cm.



**Fire Fox**™

EN ISO 11611:2015  
CLASS 1/A1+A2  
TÜV BP 60148715 0001  
TÜV 60332344 001



**EN ISO 11611:2015  
CLASS 1/A1+A2**

### 33-2800 Coverall



- 305 gr./m<sup>2</sup> flame retardant cotton
- KEVLAR® 3 ply
- Possibility to add knee pads

33-2800M  
33-2800L  
33-2800XL  
33-2800XXL  
33-2800XXXL



176 cm.  
180 cm.  
184 cm.  
188 cm.  
196 cm.



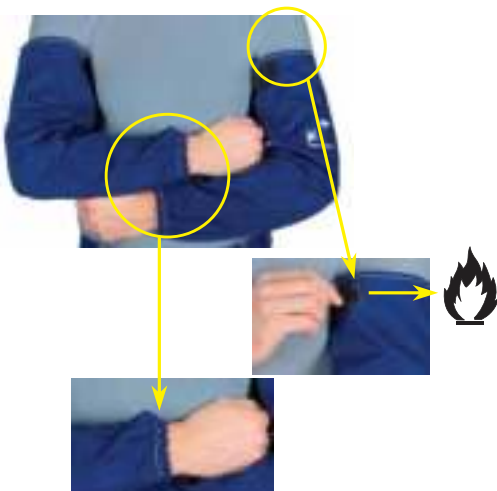
**Fire Fox**™

EN ISO 11611:2015  
CLASS 1/A1+A2  
TÜV BP 60148715 0001  
TÜV 60332344 001



**EN ISO 11611:2015  
CLASS 1/A1+A2**

### 33-2320 Sleeves



- 305 gr./m<sup>2</sup> flame retardant cotton
- KEVLAR® 3 ply

33-2320 52 cm. 19-32 cm. 36-47 cm.



**Fire Fox**™

EN ISO 11611:2015  
CLASS 1/A1+A2  
TÜV BP 60148740 0001  
TÜV 60343261 001



**EN ISO 11611:2015  
CLASS 1/A1+A2**

## SELECTION CRITERIA

In order to make the right choice in a type and/or model of a personal protection product the user should make for himself selection criteria in order to come up with the best choice for his/her situation.

Weldas wants to help with that by giving you a number of selection criteria to start by making the right choice. Please read for that the 2 following pages carefully.

### General selection criteria for leather products such as welding gloves and welding clothing

Choosing the right product is always important to make the workplace productive but also safe.

The factors to consider include one or more of the following arguments:

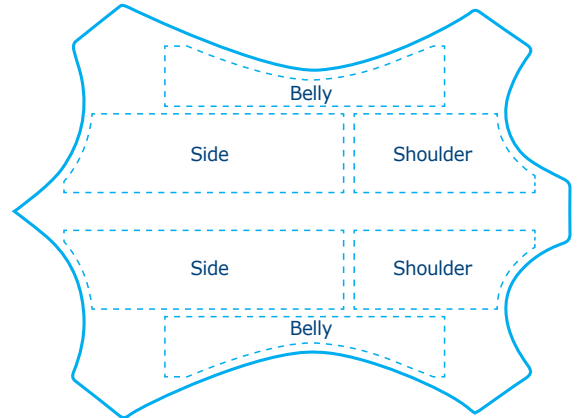
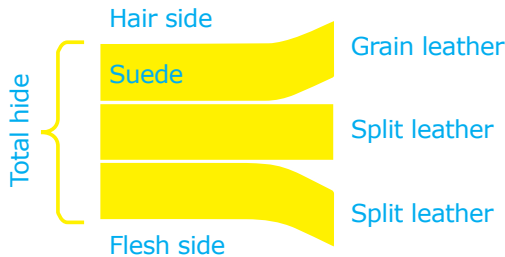
- Protection arguments: resistant to heat, flame, molten splashes, UV, electricity and punctures.
- Health arguments: values of pH, Chromium, PCP or other substances that needs to be within limits.
- Durability arguments: values of abrasion resistance, tensile strength, tear resistance, heat related dimensional change resistance, reinforced seams and stress points as well as thread strength and flame resistance.
- Comfort arguments: the right sizing and fit, dexterity, fingertip sensitivity, weight, sweat vapor transmission and absorption and climate and oil resistant.

### Type of leather selection criteria for leather products such as welding gloves and welding clothing:

Type of leather	Features
Split cow leather	Heat & flame resistant, material breaths because of open structure, also low priced
Grain cow leather	Pliable and strong, water and oil resistant
Suede (reversed) pig leather	Soft and comfortable and mostly lower priced than other leathers
Grain deer leather	Fit and dexterity and, with that, very good comfort as well as water and oil resistant
Grain goat leather	Fit and dexterity, light weight and very good comfort as well as water and oil resistant
Grain bison leather	Fit and dexterity, very good comfort, high mechanical value as well as water and oil resistant

### Leather grades and terminology:

Different portions of the hide of an animal have different characteristics: the side offers the best strength and most constant quality, the shoulder offers good strength and pliability, the belly is the lowest in quality but also the most economical.



### Choice of thumb design:

Straight thumb	Wing thumb	Keystone thumb
For extra sensitivity and/or extra welding gun grip	For seamless palm durability	For comfortable fit
<i>Note on thumb/palm design: extra durability and/or cut resistance can be achieved by adding an extra reinforcement around thumb and/or on palm of the glove.</i>		

**Remark:** the choice of materials and design for welding gloves and clothing but also for other products out of the Weldas product program always depend on what the applicable European norm desires. For that reason our products are tested and certified by a, by the European Union approved, test and certification laboratory. All test reports and certificates can be found on our special CE website:

[www.weldas-ce.com](http://www.weldas-ce.com)

Weldas offers a lot of information through its catalog, website and other means of publication in order to help the user to make the right choice of product for its personal protection but it is and will always be the responsibility of the user what product he/she does choose.

## INFORMATION ON EUROPEAN NORMS

In 1989 the council of the European community agreed on the directive 89/686/EEC which requires employers to use the appropriate personal protective equipment (PPE). As of April 21, 2018 the Regulation (EU) 2016/425 repealed the directive 89/686/EEC. All products used for personal protection must be marked with the appropriate basic CE marking and extended if the applicable norm does ask for it and according to its intended use. The regulation recognizes 3 levels of protection and the products to go with these levels:

### Category I

Category I includes exclusively the following minimal risks:

- (a) superficial mechanical injury;
- (b) contact with cleaning materials of weak action or prolonged contact with water;
- (c) contact with hot surfaces not exceeding 50 °C;
- (d) damage to the eyes due to exposure to sunlight (other than during observation of the sun);
- (e) atmospheric conditions that are not of an extreme nature.

### Category II

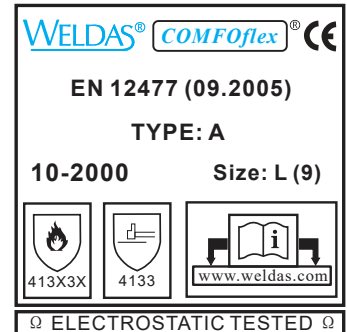
Category II includes risks other than those listed in Categories I and III;

### Category III

Category III includes exclusively the risks that may cause very serious consequences such as death or irreversible damage to health relating to the following:

- (a) substances and mixtures which are hazardous to health;
- (b) atmospheres with oxygen deficiency;
- (c) harmful biological agents;
- (d) ionising radiation;
- (e) high-temperature environments the effects of which are comparable to those of an air temperature of at least 100 °C;
- (f) low-temperature environments the effects of which are comparable to those of an air temperature of – 50 °C or less;
- (g) falling from a height;
- (h) electric shock and live working;
- (i) drowning;
- (j) cuts by hand-held chainsaws;
- (k) high-pressure jets;
- (l) bullet wounds or knife stabs;
- (m) harmful noise.

Example of imprint of a Weldas® certified glove:



### Basic norms and pictograms used for personal protection:

EN 420 norm on sizing of gloves: see page 9 of this catalogue.

EN 388 norm on mechanical risks for gloves:

Digit	Test Resistance	Level 1	Level 2	Level 3	Level 4	Level 5	
1st	Abrasion (# cycles)	100	500	2000	8000	-	
2nd	Blade Cut (index)	1,2	2,5	5,0	10,0	20,0	
3rd	Tear (Newton)	10	25	50	75	-	
4th	Puncture (Newton)	20	60	100	150	-	
5th	TDM Cut resistance (Newton)	A	B	C	D	E	F
		2	5	10	15	22	30

EN 407 norm thermal risks for gloves:

Digit	Test Resistance	Digit	Test Resistance
1st	Burning behaviour	5th	Small splashes of molten metal
2nd	Contact heat		
3rd	Convective heat	6th	Large quantities of molten metal
4th	Radiant heat		

EN 12477 norm on welding gloves and allied processes:

Minimum requirements	according to EN...	Type A Minimum Rating	Type B Minimum Rating
Electrical Insulation	pr1149-2	R <sub>Z</sub> ≥10 <sup>6</sup> Ω	R <sub>Z</sub> ≥10 <sup>5</sup> Ω
Abrasion Resistance	EN 388	2 500 cycles	1 100 cycles
Blade Cut Resistance	EN 388	1 Index 1,2	1 Index 1,2
Tear Resistance	EN 388	2 25 N	1 10 N
Puncture Resistance	EN 388	2 60 N	1 20 N
Burning Behaviour	EN 407	3	2
Contact Heat Resistance	EN 407	1 100° C	1 100° C
Convective Heat Resistance	EN 407	2 HTI≥7	0
Small Molten Splash Resistance	EN 407	3 25 Droplets	2 15 Droplets
Dexterity (pick up of rod dia.)	EN 420	1 ≤11mm	4 ≤6,5mm

EN 11611 norm on welding clothing and allied processes:

Requirement(s)	Class 1	Class 2
Tensile strength — woven outer textile material — leather		400 N 80 N
Tear strength		20 N
Dimensional change of woven textile materials Dimensional change of knitted textile materials		≤ ± 3 % ≤ ± 5 %
Flame spread * : For ISO 15025:2000, Procedure B, this requirement is not applicable.	ISO 15025:2000, Procedure A, (surface ignition) ; ISO 15025:2000, Procedure B, (edge ignition) No flaming to the top or either side edge; No hole formation a; No flaming or molten debris Mean afterflame ≤ 2 s; Mean afterglow ≤ 2 s	
Impact of spatter	15 drops	25 drops
Heat transfer (radiation)	RHTI 24 W 7	RHTI 24 W 16
Burst strength	200kPa	
Seam strength — textile material — leather	225 N 110 N	
Electrical resistance	>10 <sup>5</sup> Ω	
Innocuousness	See 6.11	
Leather	Fat content: ≤ 15 %	